



SPEC SHEET

SIMPLY BREAD DOUGH DIVIDER

BY JAC

DIMENSIONS

Tank Dimensions	18.5" x 15.35" x 2.75" (47 x 39 x 7 cm)
Tank Capacity	Min: 6.6 lbs (3 kg) / Max: 11 lbs (5 kg)
Net Weight	132 lbs (60 kg)

FEATURES

Suitable for hydrated and fermented doughs (minimum 65% hydration).

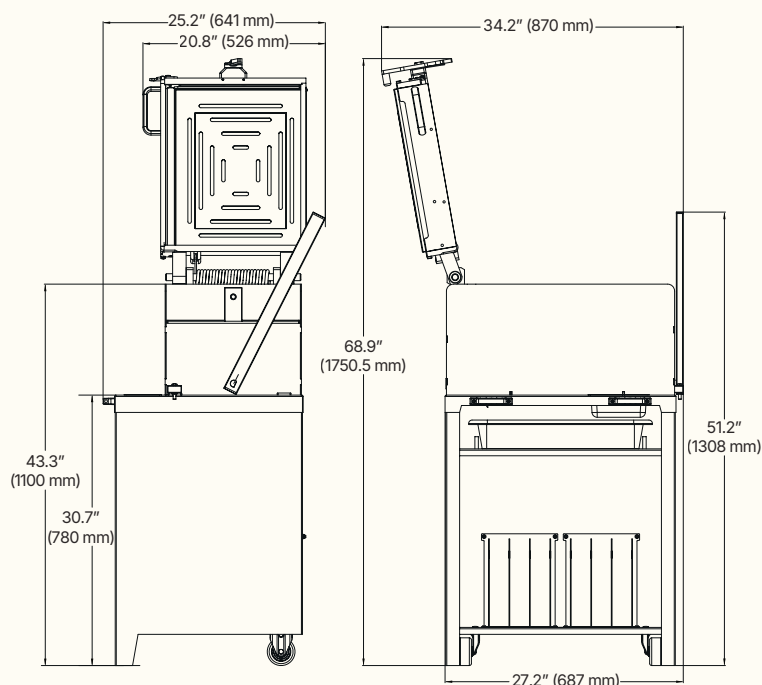
Capacity of 3 to 5 kg of dough.

Division with or without prior tamping.

Divider with tank (18.5" x 15.35" x 2.75") and full stainless steel frame.

Exemplary cleaning access (inside of the machine via the upper plate).

Eco-friendly, economical to use and maintain.



5
YEAR

WARRANTY
(PARTS EXCL. WEAR ITEMS)



Simple and secure frame locking system. Unlock by simply pressing the handle.

Easylock



Tamping and cutting operated by a progressive lever.



Quick and ergonomic grid change system.



www.simply-bread.co / info@simply-bread.co

